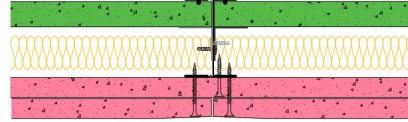


SE60-B-62(25) - SPEEDLINE System Data Sheet - Version V1 (24-10-23)

SPEEDLINE 60mm 'I' Stud Shaft Encasement
 @600mm Ctrs, with 2x BG Gyproc 15mm FireLine,
 BG Gyproc 19mm CoreBoard, 25mm APR



System Performance Breakdown

Fire Resistance:

BS476 Part 22:1987:
 (Integrity/Insulation).

Test Ref & Date or Applied Ref & Report:

Max Height:

Thickness:

Duty Grade: BS 5234: Part 2:1992:

Sound Insulation:

120/120 FromShaftSide, 90/90 FromLandingSide Minutes

BRE 302289 - BRE Report P102396-1012A

Refer to Speedline Specification Clause

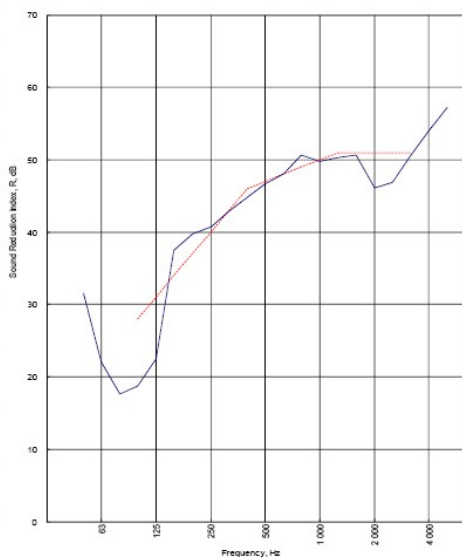
92 mm. (At Base Track, Excluding Finishes)

Severe - Annexes A-F

47 R_wdB, Date Tested or Assessed Against - 09/01/2014

Test Code:
H18569AA
 Test Date:
09/01/2014

Freq. Hz	R dB
50	31.5
63	22.1
80	17.6
100	18.7
125	22.5
160	37.5
200	39.7
250	40.7
315	42.9
400	44.8
500	46.7
630	48.0
800	50.6
1000	49.8
1250	50.3
1600	50.6
2000	46.1
2500	46.9
3150	50.6
4000	54.0
5000	57.2



Rating according to BS EN ISO 717-1:2013	R_w (C;Ctr) = 47 (-4;-10) dB		
Evaluation based on laboratory measurement results obtained by an engineering method:	C ₅₀₀₋₃₁₅₀ = -5 dB	C ₅₀₀₋₈₀₀₀ = -4 dB	C ₁₀₀₀₋₈₀₀₀ = -3 dB
	C _{10,50-3150} = -13 dB	C _{10,50-8000} = -13 dB	C _{10,100-8000} = -10 dB

TESTED AT ONE OF THE UKAS ACCREDITED LABORATORIES BELOW

B.T.C (H-Ref on Graph)

B.R.E

AIRO

S.R.L

Customer: Metsec plc Hepsec Division

BTC 18569A: Page 10 of 13



SPEEDLINE Drywall Systems, Adsetts House, 16 Europa View, Sheffield Business Park, Sheffield, S9 1XH.

Tel: 0114 231 8030.

Email: enquiries@speedlinedrywall.co.uk

(As per the requirements set out in ISO/IEC 17025:2017 regarding test data the results stated have been carried out by voestalpine Metsec plc as part of the contract to supply Speedline Metal Sections to SIG Plc)